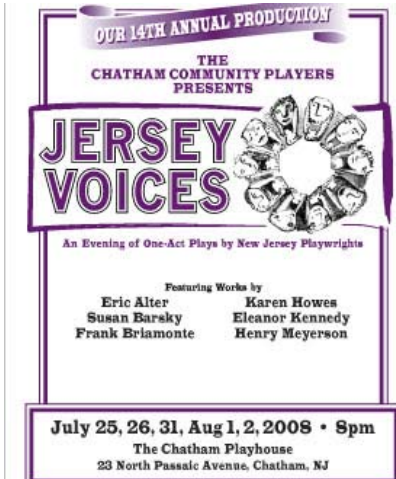


BACKSTAGE

Chatham Community Players Newsletter

July, 2008

“JERSEY VOICES” RETURN IN JULY AND AUGUST



The Chatham Community Players will present our 14th annual *Jersey Voices Festival* opening on July 25. We have provided a venue for New Jersey playwrights to present their creations since 1995, staged in our Playhouse at 23 North Passaic Avenue, Chatham. This year, six one-act plays will be offered on Friday and Saturday, July 25 and 26; and Thursday through Saturday, July 31 and August 1 and 2, all at 8 p.m. Tickets are \$15 for adults (19 and older), \$10 for youth (18 and under). Order at our website, www.chathamplayers.org, and click on "TicketLeap." For more information, call our box office at 973-635-7363.

“*Jersey Voices*’ continues to grow and evolve,” said Artistic Director **Robert Lukasik**. “What started as a summer pro-gram for Players has grown into a successful artistic endeavor in its own right, matching talented New Jersey playwrights with equally talented local directors. We are pleased with the response and support we continue to receive from the performing community, and we are fortunate, once again, to have a wonderfully talented cast of actors to bring these new works to life.” The program to be presented:

“**Parting Gifts**” by **Frank Briamonte**, directed by **Arnold Buchiane** of Summit.

This is a comedy with heart that reminds us not to wait to make amends and seek reconciliation.

The cast includes **Robert Lukasik, Peter Hurihan, Paul Sacks**, and **Don Howes**.

“**Tech Support**” by **Henry Meyerson**, directed by **Joanne Scanlon** of Chatham.

When was the last time you called “Tech Support” for assistance: This is the call from hell!

Featured are **Stacey Simon** and **Terri Sturtevant**.

“**Over the Line**” by **Eleanor Kennedy**, directed by **Maybelle Cowan-Lincoln** of Morris Plains.

Local politics take a back seat when two low enforcement officials discover their opportunity for 15 minutes of fame.

Performers are **Frank Briamonte, Tom Hodge**, and **Katie Parziale**.

“**Road Kill**” by **Karen Howes**, directed by **Mark Phelan** of Parsippany.

What really happens in a diner off a long stretch of road in the middle of nowhere?

Actors are **David Jimenez** and **Victoria Steele**.

“**Fowl Play**” by **Susan Barsky**, directed by **Jon DeAngelis** of Chatham.

A divorced woman and her feathered visitor share a Thanksgiving morning, learning that with the right company, hard times can become enjoyable—okay, bearable.

This play is performed by **Liz Royce** and **Tom Blewitt**.

“**Mirror, Mirror**” by **Eric Alter**, directed by **Don Howes** of Chatham.

Who do you see when you look in a mirror?

The production’s cast is **Julia Sann, Kristin Bennett, Jessica Schwartz**, and **Cooper Sacks**.

More than 100 scripts were received from over 50 playwrights across the State, presenting the selection committee with difficult choices. Three of this year’s selections are written by playwrights whose works have been featured in *Jersey Voices* previously—Alter, Briamonte, and Meyerson, while the three other pieces are written by newcomers—Barsky, Howes, and Kennedy.

“Wait Until Dark” Auditions

Chatham Players kicks off its 87th Season with a production of “Wait Until Dark” by Frederick Knott. **Auditions** will be held on **Monday, July 28th and Wednesday, July 30th 7:00PM at The Chatham Playhouse** 23 North Passaic Avenue Chatham, NJ. **Production dates are October 3 – 18, 2008.**



Audition Information:

The director, Stephen Davis, asks that the actors bring a monologue (2 minutes max) of their choice OR read from the sides provided. In addition, actresses auditioning for Susy should prepare an everyday physical action that shows the audience through use of their other senses that they are “blind” as well as being prepared to read from the script.

“Wait Until Dark” Summary:

In “Wait Until Dark” written by Dial “M” for Murder playwright Frederick Knott, a recently blind woman must uncover the truth behind the lies of three thugs who attempt to manipulate their way into her world. Two ex-cons, Mike Talman and Carlino, are roped into the 1960’s world of drug dealer, Roat, to convince the blind Susy Hendrick to turn over a doll smuggled unknowingly into the United States by Susy’s husband, Sam. While Sam is away, Roat weaves a deadly web of deception around Susy that climaxes in a heart-pounding game of cat and mouse. Notable past Roat/Susy pairings include Robert Duvall/Lee Remick (NY premiere ’66), Quentin Tarantino/Marisa Tomei (NY revival ’98) and in the 1967 film Alan Arkin/Audrey Hepburn (nominated for an academy award).

Character Descriptions:

Mike Talman: Male, 30-45, leading man ex-con, tall dark and handsome, smooth talk with all the answers, a gentleman who took a wrong turn along the way, loyal to Carlino, but out for himself. Leads with his heart, his greatest asset and his weakest link. Finds himself caught in his own seductive trap of Susy.

Carlino: Male, 30-45, the side kick ex-con, short and stocky, the “heavy” with a knuckle duster, interested in filling his stomach and covering his tracks. Loyal to Mike Talman from past cons, yet out for number one.

Harry Roat: Male, 25-40, unpredictable chameleon, sleek and sinister, believes he is always one step ahead of everyone which becomes his downfall, a dangerous smoking volcano that could erupt at anytime. Suspicious and antagonistic towards all.

Susy Hendrix: Female, 22-35, honest, youthful, and open. Trapped in her own world and afraid to seek her independence. Discovers she has a strength that she did not know that she had. Transformational relationship with Gloria from enemy to sister to mother figure.

Sam Henderix: Male, 30-45, a photographer whose life’s work based on sight falls for a blind woman. A “teacher” who believes he must challenge Susy to find her independence by developing her other senses.

Gloria: 9-year-old girl, actress could be older but must be able to play young, comes from a dysfunctional household of divorce, displaces aggression toward parents on Susy, wants Sam’s undivided attention since real father has left home. Self conscious because she has to wear glasses for the first time

Policeman 1/Policeman 2: Male or female, 20-45

The Chatham Players have an open call casting policy. All roles are open, none are precast, and everyone is encouraged to audition. For additional information contact Kristin Furlong at kristinbarber33@yahoo.com

ANNUAL MEETING IN MAY AWARDS

The **Shipler Award**, for outstanding effort in the current season, was presented to **Mara Lundstrom**, who, in addition to her work as Secretary and Trustee, also chaired Hospitality, and worked on every production in a variety of functions. Winner of the **Dawley Award** for outstanding effort over time was **Roy Pancirov**, our President, who designed sets and built them, and also helped in many other ways. Congratulations to both for richly deserved awards.

Try iGive.com! Please use the online service called **iGive.com**. It doesn't cost a cent to join, and once you are a member, every time you shop the Mall at iGive, CCP can get a percentage of each purchase you make. You can find the link if you go to the **SUPPORT US** section of our website, or www.chathamplayers.org/support. Just think of it! Free money for the Chatham Community Players, your choice of over 500 nationally-known online merchants like Barnes & Noble, Home Depot, Lands' End, Macy's, and PETsMART, your privacy guaranteed, plus money-saving deals and specials every day! Please note—by clicking on the link to iGive, you are leaving the Chatham Community Players' website, and entering a privately- owned website created, operated, and maintained by iGive.



HERE AND THERE...

...Congratulations to **Kristin Barber** and **Chris Furlong**, our former President, on their marriage last month...**Susie Spiedel** is currently performing at Sunflight Theater, Beach Haven, as the wily and corrupt jail matron in "*Chicago*," winning great reviews.

In Memoriam

Ed Ballowe

Former CCP President, star of many musicals with his rich and powerful voice (notable roles: Daddy Warbucks in "*Annie*;" Maj. Gen. Stanley in "*Pirates of Penzance*" and many more

Funding for Chatham Community Players has been made possible in part by funds from the Arts Council of the Morris Area through the New Jersey State Council on the Arts/Department of State, a Partner Agency of the National Endowment for the Arts